



CV. SINAR JAYA TEKNIK

***DISTRIBUTOR & SUPPLIER
MATERIAL HIDROLIK & PNEUMATIK
Terlengkap & Terpercaya***



KATALOG PRODUK

Hydraulic & Pneumatic Cylinder Rods & Tube

www.sinarjayateknik.com

PROFIL

CV. SINAR JAYA TEKNIK

Berdiri pada tahun 2010, **CV. Sinar Jaya Teknik** hadir sebagai perusahaan distributor & supplier material hidrolik & pneumatik terlengkap & terpercaya di Indonesia.

Berlokasi di Surabaya, Jawa Timur **CV. Sinar Jaya Teknik** bersama tim profesional, siap melayani penjualan berbagai jenis & ukuran material hidrolik & pneumatik dengan kualitas produk terbaik serta pelayanan & pengiriman yang cepat dengan cakupan wilayah skala nasional seluruh Indonesia.



Visi

Menjadi perusahaan penyedia kebutuhan material hidrolik & pneumatik terlengkap & terpercaya

Misi

Menyediakan produk dan solusi lengkap untuk kebutuhan material hidrolik & pneumatik.

Menjamin mutu kualitas dan standarisasi produk secara keseluruhan demi memenuhi kepuasan pelanggan.



MENGAPA MEMILIH KAMI



Harga Kompetitif



Pelayanan Cepat



Ketersediaan Barang



Jaringan Distribusi Luas



Pengiriman Tepat Waktu

Hard Chromium Plate Piston Rods Material SAE1045 (S45C)

Ø mm	Ø mm	Ø mm	Ø mm	Ø mm	Ø mm
4	15	28	50	85	135
6	16	30	55	90	140
7	17	31,5	56	95	145
8	18	32	60	100	150
10	19	35	63	105	160
12	20	35,5	65	110	165
12,5	22	36	70	115	170
13	22,4	38	71	120	180
14	24	40	75	125	190
14,28	25	45	80	130	200

Ø Inch	Ø Inch
3/8" (9,52 mm)	2,75" (69,85 mm)
1/2" (12,7 mm)	3" (76,2 mm)
3/4" (19,05 mm)	3,25" (82,55 mm)
1" (25,4 mm)	3,5" (88,9 mm)
1,25" (31,75 mm)	4" (101,6 mm)
1,5" (38,1 mm)	4,25" (107,95 mm)
1,75" (44,45 mm)	4,5" (114,3 mm)
2" (50,8 mm)	5" (127 mm)
2,25" (57,15 mm)	5,5" (139,7 mm)
2,5" (63,5 mm)	6" (152,4 mm)

Detail :

Size : 4 - 200 mm
 Length : 3000 - 6000 mm
 Special Length : 10 M
 External Diameter Accuracy : f8, h8
 Surface Roughness : 0.8 - 1.6S
 Hard Chrome Thickness : 20 micron ± 5%
 Hardness of Hard Chrome Plating : Minimum HV800
 Material : SAE1045 (S45C)
 Other Specification can be custom-made

Application :

- Mechanical Construction Use Pipe
- Automachines
- Sport Equipments
- Packaging Machinery
- Hydraulic/Pneumatic Shaft
- Precise machine pipes
- Plastic Injection Machines
- Agriculture Machine



**Other specifications can be ordered, please kindly contact with us!*

Induction Hardening Chromium Plate Rods (HRC 54 ± 2 Degrees) : S45C

Detail :

Length : 3000 - 6000 mm
 Diameter Tolerance : 96
 Hardness HRC 52 ± 2 degree
 Hard Chrome Thickness : 20 micron ± 5%
 Hardness of Hard Chrome Plating :
 Minimum HV700
 Surface Roughness under RZ 1.2.
 Material : SAE1045 (S45C) and hardening
 by induction, heat treatment and
 hard chrome plate
 Induction chrome shaft reaches uniform
 hardening thickness
 After induction proceeding,
 hardness HRC 54 ± 2 degree
 Other Specification can be custom-made

Application :

- Cylinder piston rod
- Plastic injection machines
- Linear motion shaft
- Sport equipment
- Slide rail
- Automatic

Ø mm	Ø mm	Ø mm
8	32	95
9,5	35	100
9,52	36	105
10	38	110
12	40	115
13	45	120
14	50	125
15	55	130
16	56	135
17	60	140
18	63	145
20	65	150
22	70	160
22,4	75	170
25	80	180
28	85	200
30	90	

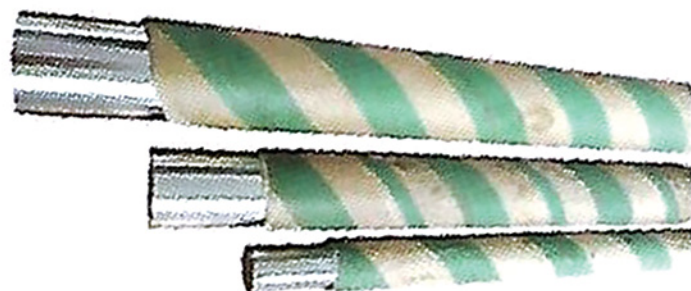
Ø Inch
1/2" (12,7 mm)
1" (25,4 mm)
1,25" (31,75 mm)
1,5" (38,1 mm)
1,75" (44,45 mm)
2" (50,8 mm)
2,25" (57,15 mm)
2,5" (63,5 mm)
2,75" (69,85 mm)
3" (76,2 mm)
3,25" (82,55 mm)
3,5" (88,9 mm)
4" (101,6 mm)
4,25" (107,95 mm)
4,5" (114,3 mm)
5" (127 mm)
5,5" (139,7 mm)

**Other specifications can be ordered, please kindly contact with us!*

CF53 Induction Hardening Chromium Plate Rods (HRC 62 ± 2 Degrees)

Detail :

Steel Grade Material : CF53
 Diameter Tolerance : 96
 Hardness HRC 62 ± 2 degree
 Hard Chrome Thickness : 20 micron ± 5%
 Straightness (mm/m) : 1/1000 mm
 Hardness Dept (mm) : 0,7 - 2,5



Ø mm	Ø mm	Ø mm	Ø mm
6	14	32	55
7	15	35	58
8	16	38	60
9,5	20	40	63,5
10	25	45	65
12	25,4	50	70
13	30	50,8	75

Introduction :

- High stability and hardness, low deformation, good wear resistance
- Surface for linear bearing shaft, pillar and other high precision machinery parts

**Other specifications can be ordered, please kindly contact with us!*

SUJ - 2 Induction Hardening Chromium Plate Rods (HRC 62 ± 2 Degree)

Ø mm	Ø mm
8	31,75
10	32
12	35
13	40
15	44,45
16	45
19,05	50
19,5	60
20	76,2
25	82,55
28	101,6
30	114,3

Detail :

SUJ-2 bearing steel has good wear resistance ability an high hardness degree. High stability and low deformation, so soft point after induction heat treatment. Hardness can reach HRC 62 ± 2 degree with the hard chromium plate. Surface roughness RZ 1.2.

Application :

- Shaft linear bearing
- Slide rail, guide rod
- Auto machinery precise part part

Stainless Steel Chromium Plate Rod (SUS 303, SUS 304)

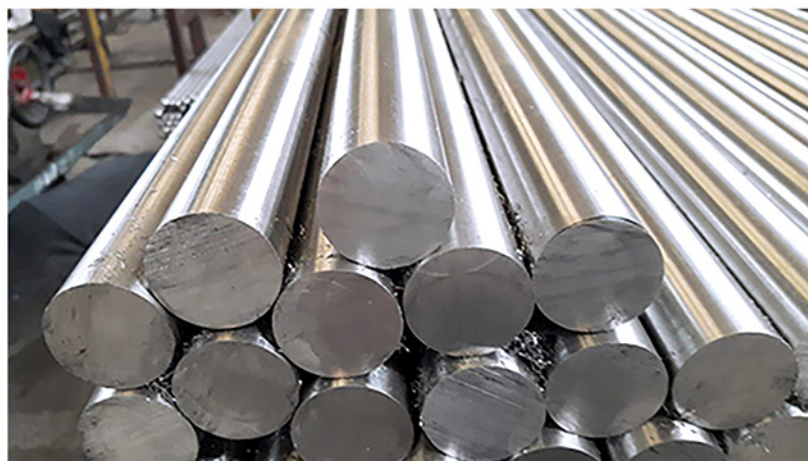
Ø mm	Ø mm
4	30
6	32
8	35
10	40
12	45
16	50
18	60
20	70
25	

Detail :

SUS 303 : Ø 4 - 10 mm
 SUS 304 : Ø 12-70 mm
 Length : 2000 - 6500 mm
 Surface Tolerance : h8 - f8
 Chrome Thickness : 20 micron ± 5%
 Surface Hardness : HV800 minimum
 Corrosion resistance, good abrasion resistance, low magnetism, long working life

Application :

- Hydraulic Cylinder
- Auto Machines
- Chemical industrial machine
- Medical equipment
- Food machine



Seamless Steel Honed Tube Material STKM13C

Detail :

ID : 18 - 400 mm
 OD : 31 - 508 mm
 Internal Diameter Accuracy : H7, H8, H9
 Internal Roughness : 0.8 - 3S
 Material : JIS3445 STKM13C
 Length : 3000 - 8000 mm
 Special Length : 13 M
 Other Specification can be custom-made



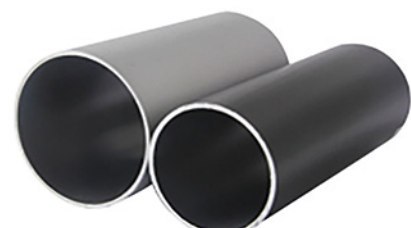
ID*OD Ø mm	ID*OD Ø mm	ID*OD Ø mm	ID*OD Ø mm
18*31	80*95	125*150	190*220
20*30	80*100	130*150	190*232
25*35	80*121	130*153	200*216
30*40	85*95	135*160	200*220
32*42	85*100	140*153	200*232
35*45	85*121	140*160	200*242
38*50	85*127	140*165	200*254
40*50	90*100	140*170	205*232
40*55	90*105	145*160	210*255
45*55	90*110	145*165	215*255
45*60	90*140	145*170	220*267
50*60	95*105	150*170	220*273
50*65	95*110	150*175	225*255
50*70	95*115	150*180	225*273
55*65	100*110	155*170	230*273
55*70	100*115	160*172	240*318
55*76	100*120	160*180	240*324
60*70	100*125	160*190	250*268
60*75	100*130	165*190	250*274
60*80	100*135	170*190	250*299
63*73	105*120	170*195	250*323
63*76	105*125	170*203	250*325
63*80	110*120	175*190	270*355
65*75	110*125	175*195	280*340
65*80	110*130	175*205	280*355
65*85	110*135	180*196	300*355
70*80	115*130	180*202	300*377
70*85	115*135	180*205	330*430
70*90	120*135	180*210	350*426
75*85	120*140	180*216	360*457
75*90	125*137	180*220	
75*95	125*140	185*205	
80*90	125*145	185*220	

ID*OD Ø mm	ID*OD Ø mm
38,1*50,8	165,1*190
50,8*63,5	177,8*190,8
50,8*65	177,8*203,2
63,5*76,2	177,8*216
63,5*80	184,15*210
69,85*85	184,15*219
69,85*90	190,5*210
76,2*88,9	190,5*216
76,2*95	190,5*232
82,55*95	203,2*228,6
82,55*98	203,2*232
88,9*105	209,55*242
88,9*115	228,6*273
95,25*127	234,95*267,4
95,25*140	241,3*299
101,6*118	254*355
101,6*121	266,7*340
101,6*133	304,8*355
107,95*125	
114,3*127	
114,3*133	
120,65*140	
120,65*145	
127*146	
127*150	
127*152	
139,7*165	
139,7*168	
152,4*171,45	
152,4*177,8	
152,4*178	
152,4*180	
158,75*185	

Application :

- Hydraulic/Pneumatic cylinder
- Precise machine pipes
- Mechanical Construction Use Pipe
- Automobiles
- Sport Equipments
- Agriculture machine

**Other specifications can be ordered, please kindly contact with us!*



Internal Unhoned With External Hard Chromium Plate Tube (Hollow Shaft)

∅ ID*OD mm	∅ ID*OD mm	∅ ID*OD mm	∅ ID*OD mm
14*20	40*55	65*75	85*95
25*30	45*60	65*80	90*110
25*35	50*60	70*90	95*110
30*40	50*65	75*85	100*115
30*45	55*75	75*90	105*120
30*50	60*70	80*90	110*120
35*45	60*75	80*95	110*130
40*50	60*80	80*100	140*150



Detail :

Material : JIS STKM13C
 Chrome Thickness : 20 micron ± 5%
 Surface Hardness : HV800 minimum
 External Diameter Accuracy : f8

Application :

- Elevator Cylinder
- Telescope Cylinder
- Sport Equipment
- Automobiles

Internal Honed With External Hard Chromium Plate Tube (Hollow Shaft)

∅ ID*OD mm	∅ ID*OD mm
25*32	80*95
30*40	80*100
35*45	85*95
40*50	90*100
50*60	90*105
50*65	90*110
60*70	95*110
63*73	100*115
65*75	110*120
70*80	110*130
70*85	125*140
70*90	125*145
80*90	140*150

Detail :

Internal Diameter Accuracy : H7, H8, H9
 External Diameter Accuracy : f8
 Internal Roughness : 0,8 - 3S
 Hard Chrome Thickness ; 20 micron ± 5%
 Material : JIS STKM13C
 Tube with ID honed and OD hard chrome plated is oxidization resistance, and has high working efficiency because of great ability of oil storage.

Application :

- Elevator Cylinder
- Telescope Cylinder
- Scalling ladder
- Vertical Parking System



Aluminium Alloy Round Tube for Pneumatic Cylinder - AL

Ø ID*OD mm	Lenght mm	Ø ID*OD mm	Lenght mm	Ø ID*OD mm	Lenght mm
20*25	2050	50*58	3050	125*135	3050
20*27	2050	63*68	3050	140*150	3050
25*30	2050	70*77	3050	150*160	3050
30*35	3050	75*82	3050	160*170	3050
30*37	3050	80*86	3050	180*190	3050
32*37	3050	80*86,4	3050	200*210	3050
40*45	3050	100*106	3050	250*262	3050
40*47	3050	100*107	3050		
50*55	3050	100*108	3050		

Detail :

Material : AA6063 TD83
Anodic Coating Film
Plating Thickness : 25 micron
ID Accuracy : H9
Hardness : Minimum HV400
Straightness : 0,8 - 1 mm/M

Application :

- Pneumatic cylinder
- Portable device
- Various types of air pressure
- Pneumatic equipment

Stainless Seamless Steel Honed Tube (SUS 304)

Ø ID*OD mm	Ø ID*OD mm
20*30	50*60
25*30	63*73
30*35	80*86
30*40	80*90
32*37	100*110
40*45	125*135
40*50	160*168
50*56	

Detail :

Lenght : 3000 - 6000 mm
ID Tolerance : H8
ID Surface Roughness : Ra 0.2 - 0.8
Corrosion resistance, good abrasion resistance,
low magnetism, long working life

Application :

- Hydraulic Cylinder
- Auto Machines
- Chemical industrial machine
- Medical equipment
- Food machine
- Marine machines
- Semi conductor vacant machine equipment



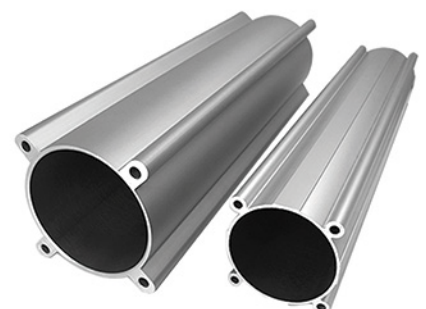
Aluminium Alloy Compact Tube for Pneumatic Cylinder

Ø mm	Ø mm
12	40
16	50
20	63
25	80
32	100

Detail :

Material : AA6063 TD83
Anodic Coating Film
Plating Thickness : 25 micron

ID Accuracy : H11
Hardness : Minimum HV400
Straightness : 0,8 mm/M



Aluminium Alloy Profile Tube for Pneumatic Cylinder ISO - AM

Ø mm	Lenght mm
32	2400
40	2400
50	2400
63	2400
80	2400
100	2400

Application :

- Pneumatic cylinder
- Portable device
- Various types of air pressure
- Pneumatic equipment



CV. SINAR JAYA TEKNIK

DISTRIBUTOR & SUPPLIER
MATERIAL HIDROLIK & PNEUMATIK
Terlengkap & Terpercaya



Gudang :

Gudang Asri Blok B6-3
Palem Watu Menganti
Gresik- Jawa Timur

Kontak Kami :

☎ Telephone : 031 - 79971331
📞 HP / WA : 08175268357
✉ E-Mail : sinarjaya.teknik@yahoo.com
🌐 www.sinarjayateknik.com